

## Genesis Sideboard

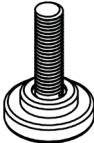
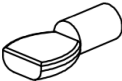

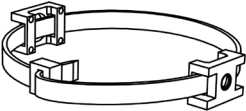
---

### ASSEMBLY INSTRUCTIONS

ASSEMBLY INSTRUCTIONS: STEP 1

Read these instructions carefully and keep for future reference.  
Refer to parts inventory for guidance, and ensure you have all pieces before starting. When assembling, place all parts on a soft, clean, and flat surface, such as a carpet, to prevent scratches.

PARTS INVENTORY		
ID	DESCRIPTION	QTY
A	SIDEBOARD	1

HARDWARE INVENTORY				
ID	IMAGE	DESCRIPTION	SIZE	QTY
A		LEVELING GUIDE	1/4" x 25mm	4
H2		SHELF PEGS	4mm	12
H3		K PUSH	37mm	4
H4		ANTI TIPPING HARDWARE KIT (2 PLASTIC BASE, 1 REUSABLE PLASTIC ZIP, 1 WOOD SCREW #8 X 1 1/4" AND 1 WOOD SCREW #8 X 3/4")	340mm	2

# JOON LOLOI

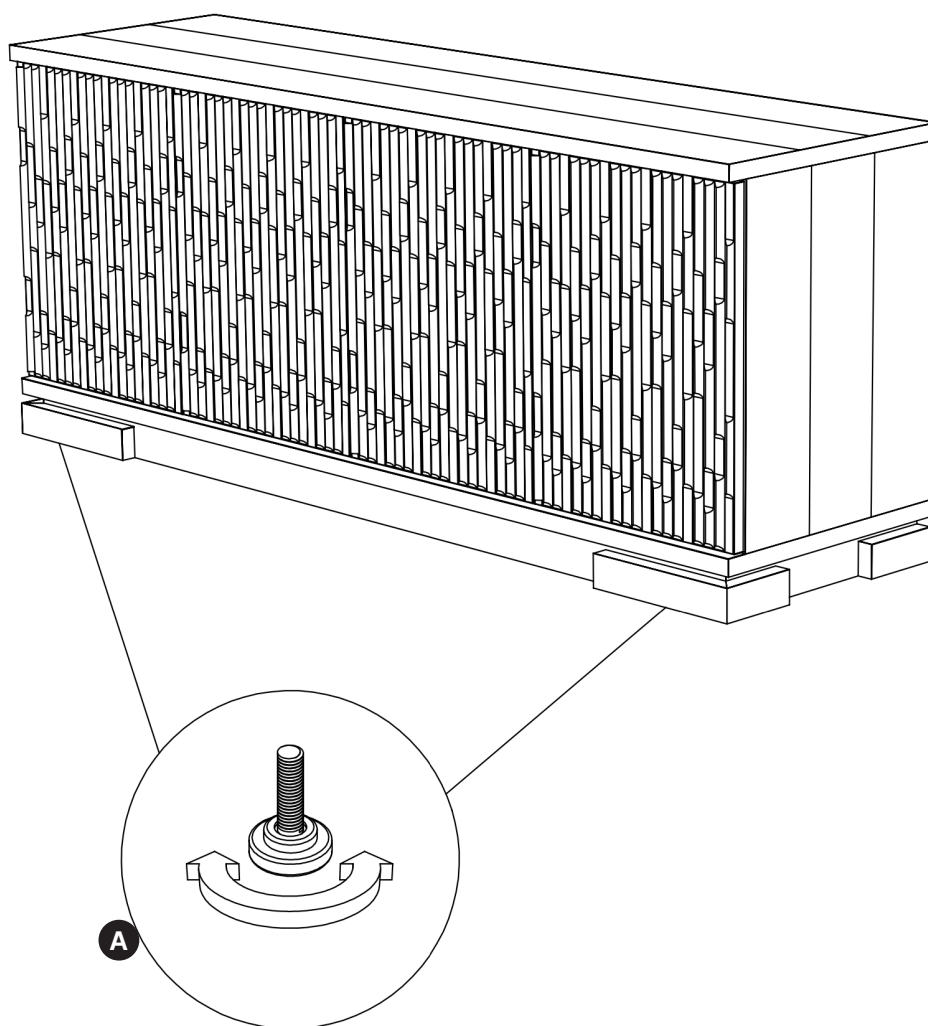
---

## STEP 2

The **LEVELING GLIDES (H1)** at the bottom of the Genesis Sideboard can move up and down by twisting left or right.

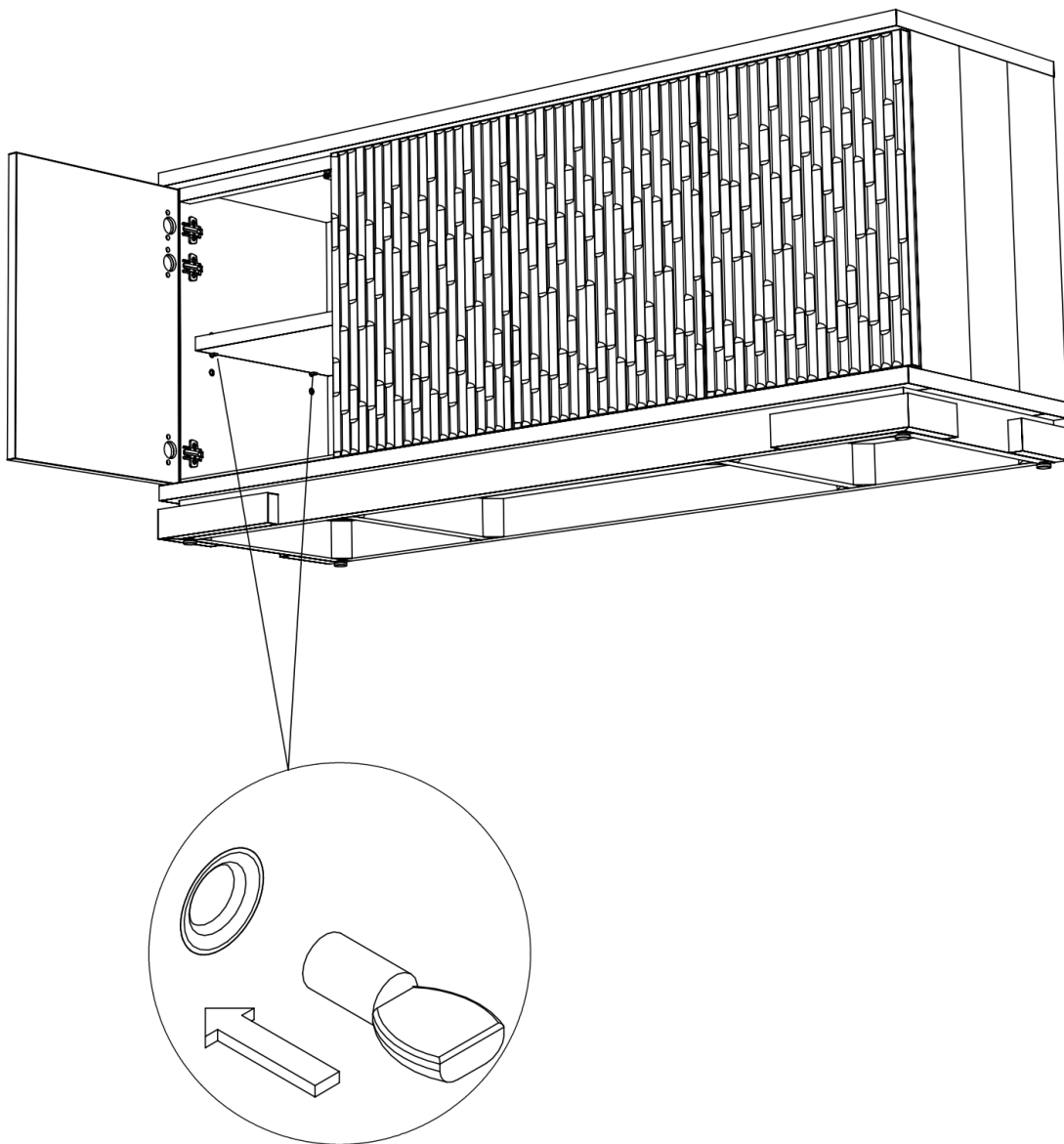
This allows the user to level the sideboard.

Adjust levels as needed.



## STEP 3

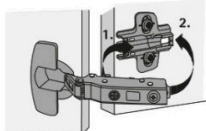
Insert the **SHELF PEGS (H2)** into the metal eyelets to hold the shelves, repeat for all shelves.



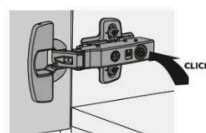
## STEP 4

Leveling of hinges (if necessary), to adjust the position of the doors.

### Mounting



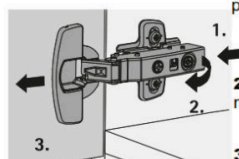
Toolless fast installation is distinguished by ergonomic handling. To begin with, all hinges are pushed onto the mounting plate from the front.



- ① The hinge arms are then lightly pressed onto the mounting plate so they engage with an audible click.
- ② The hinge arm is now securely attached to the plate at five points and with zero play. As a general rule, the hinges are clipped onto the carcase from top to bottom.

### Hinge adjustment

#### Removal

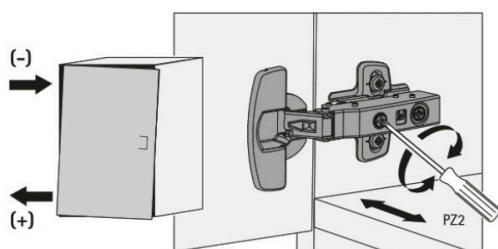


**1** Hinges are removed in the opposite order, i.e. from bottom to top. The rear part of the hinge is pressed by thumb against the mounting plate while pushing on the release button

**2** The hinge arm is now lifted off the mounting plate

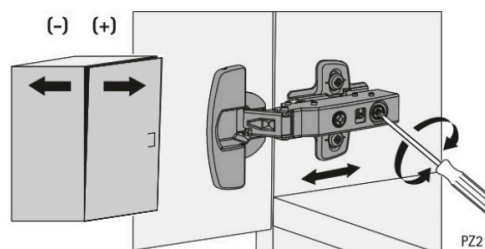
**3** and the door can be removed towards the front

#### Overlay Adjustment



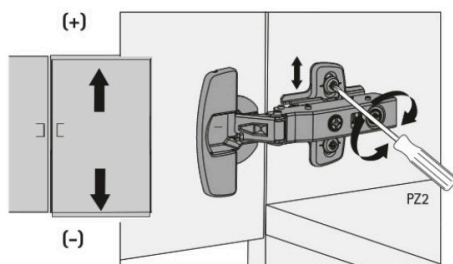
Turn screw clockwise: Door overlay is reduced (-). Turn screw anti-clockwise: Door overlay increases (+).

#### Depth Adjustment



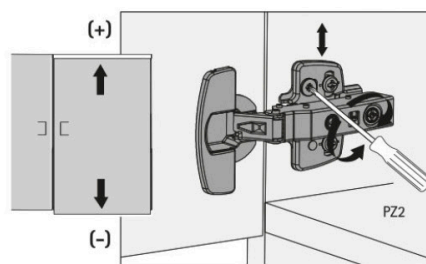
Direct, infinitely variable depth adjustment

#### Height Adjustment



Height-adjustable mounting plates permit exact alignment of door height.

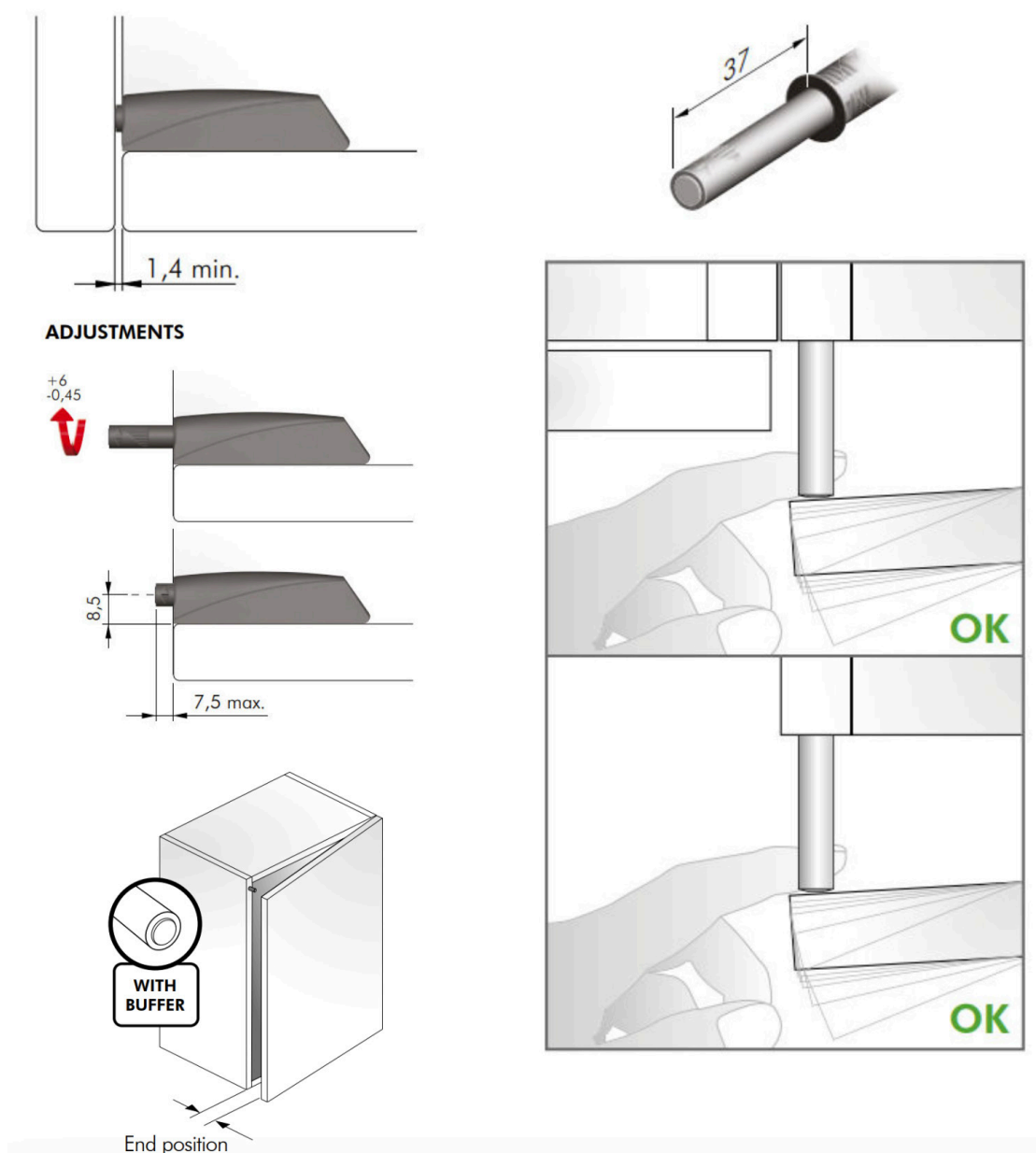
#### Height Adjustment



Direct, infinitely variable height adjustment by cam screw.

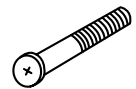
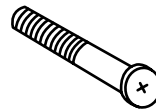
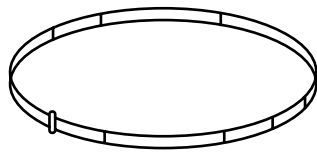
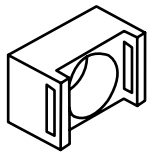
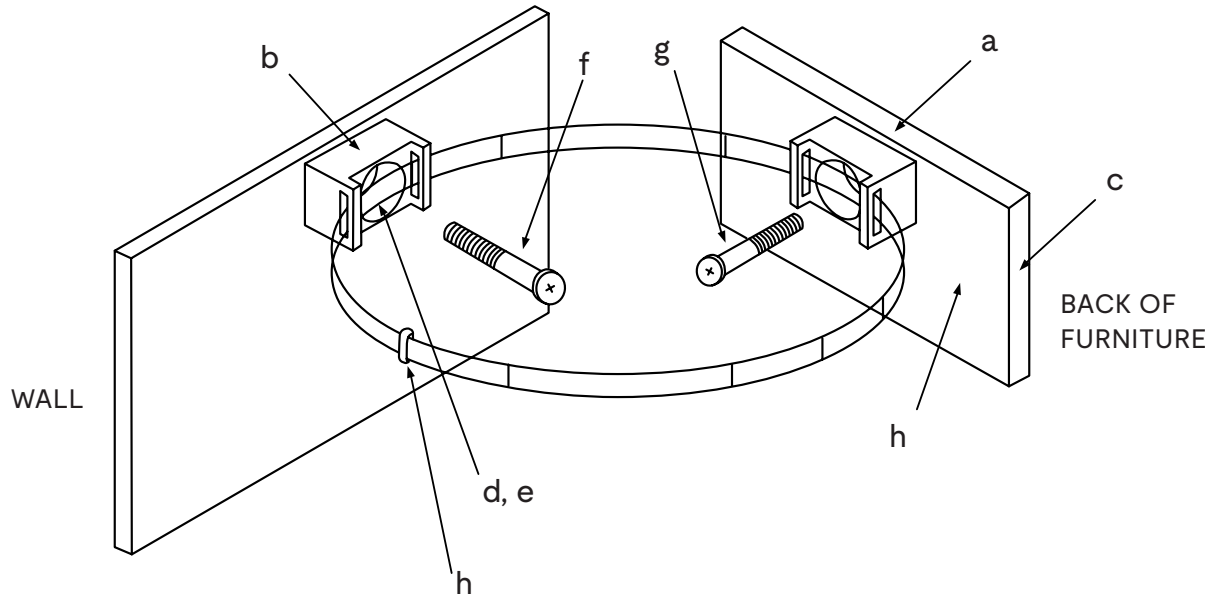
## STEP 5

The **K PUSH (H3)** in the inside of the Genesis Sideboard can move forward and backward by twisting left or right. This allows the user to level the opening position of the doors. Adjust levels as needed.



## STEP 6

### ANTI TIPPING HARDWARE KIT



2 Plastic Base 23 mm x 16 mm

1 Reusable Plastic Zip 8 x 340 mm

1 Wood Screw 8 x 1 1/4" (Large)

1 Wood Screw 8 x 3/4" (Short)

## STEPS

- Locate wall studs behind furniture.
- Mark stud locations on wall with corresponding locations at top of furniture.
- Move furniture away from wall.
- Position bracket on stud.
- Drill holes.
- Screw brackets into studs.
- Screw brackets into furniture back.
- Move furniture close to the wall and line up the brackets.
- Thread the plastic zip cord into wall bracket and furniture bracket.