

Kenwood Coffee Table


ASSEMBLY INSTRUCTIONS

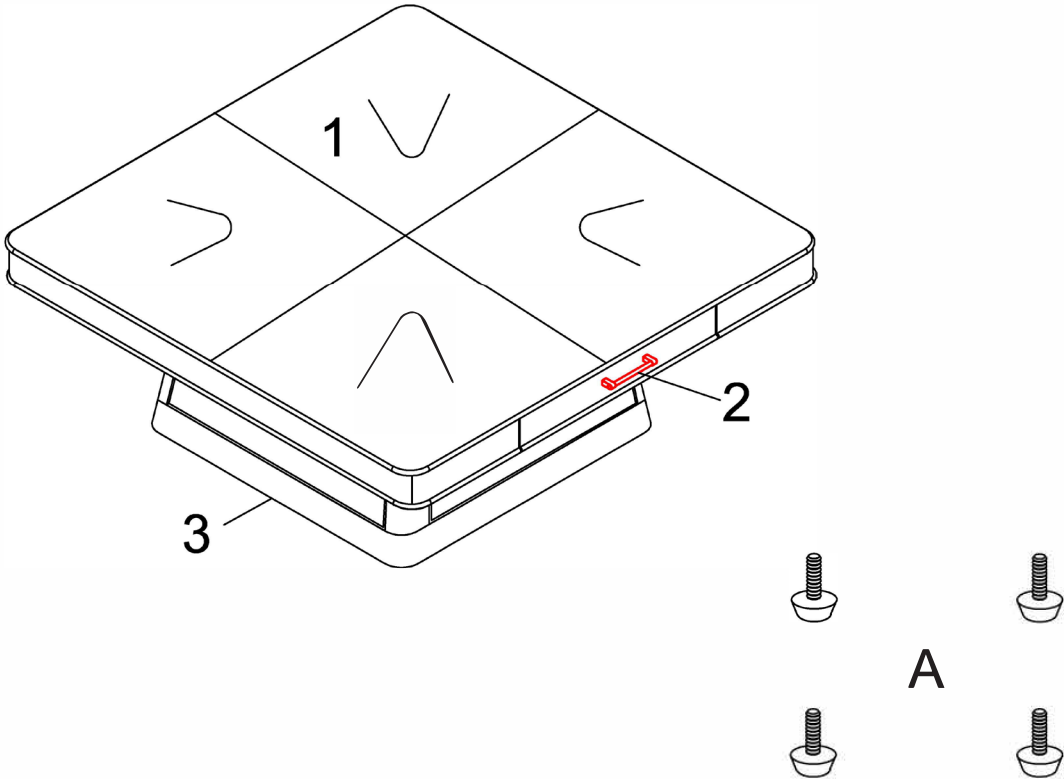
JOON LOLOI

ASSEMBLY INSTRUCTIONS

Read these instructions carefully and keep for future reference. Refer to parts inventory for guidance, and ensure you have all pieces before starting. When assembling, place all parts on a soft, clean, and flat surface such as a carpet to prevent scratches.

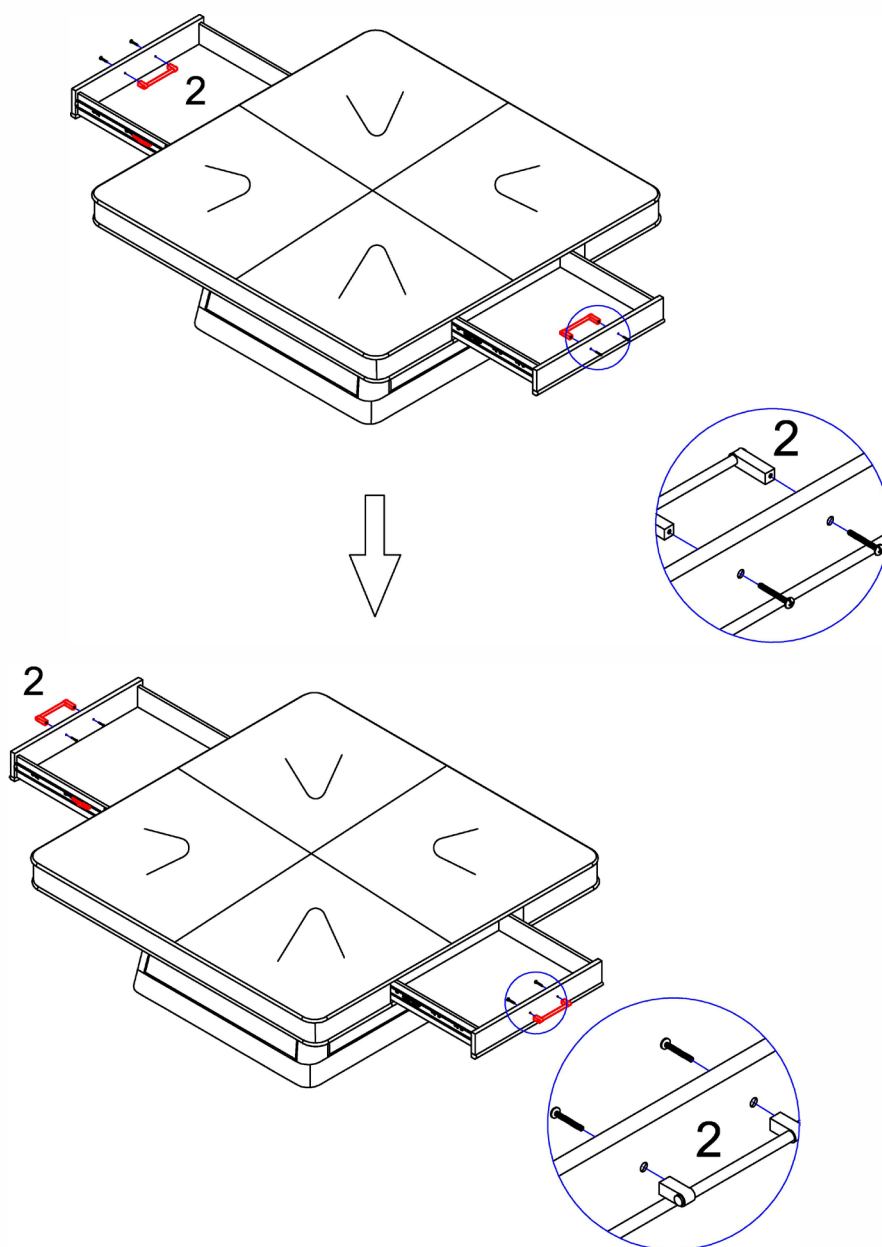
PARTS INVENTORY		
ID	DESCRIPTION	QTY
1	COFFEE TABLE	1
2	HANDLES	2
3	BASE	1

HARDWARE INVENTORY				
ID	IMAGE	DESCRIPTION	SIZE	QTY
A		LEVELER	18 x 6 x 20mm	4



STEP 1

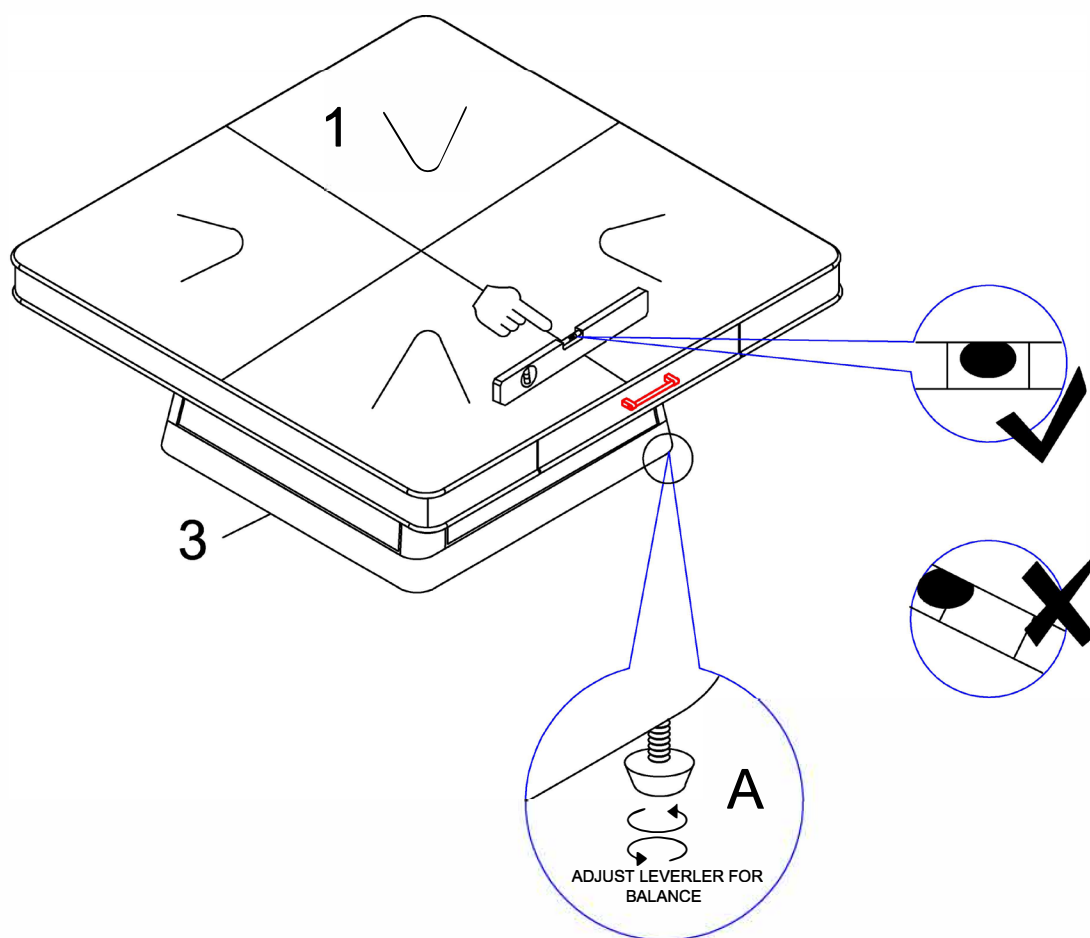
Use a screwdriver to remove the pre-installed **HANDLES (2)** from inside the drawers. Then, use the screwdriver to reattach the **HANDLES (2)** to the outside of the drawers.



JOON LOLOI

STEP 2

Place the **TABLE (1)** on its side so that the bottom is accessible. Using your hand or a wrench, install each **LEVELER (A)** onto each corner of the table **BASE (3)**. To adjust, turn the **LEVELER (A)** clockwise to raise or counterclockwise to lower the coffee table. Make small adjustments and check stability after each turn.



JOON LOLOI

STEP 3

Once each **LEVELER (A)** is screwed to your desired level, the assembly is complete.

