

Paulo Bookshelf

ASSEMBLY INSTRUCTIONS

JOON LOLOI

ASSEMBLY INSTRUCTIONS

Read these instructions carefully and keep for future reference. Refer to parts inventory for guidance, and ensure you have all pieces before starting. When assembling, place all parts on a soft, clean, and flat surface such as a carpet to prevent scratches.

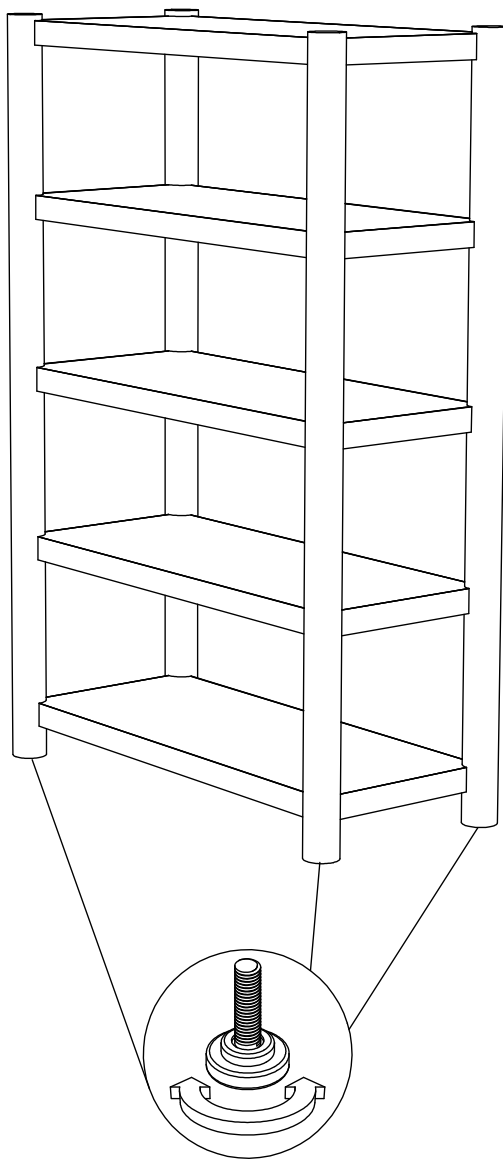
PARTS INVENTORY		
ID	DESCRIPTION	QTY
A	BOOKSHELF	1

HARDWARE INVENTORY				
ID	IMAGE	DESCRIPTION	SIZE	QTY
1		LEVELER	1/4" x 25mm	4
2		ANTI TIPPING HARDWARE KIT (2 PLASTIC BASE, 1 REUSABLE PLASTIC ZIP, 1 WOOD SCREW #8 X 1 1/4" AND 1 WOOD SCREW #8 X 3/4")	340mm	2

JOON LOLOI

STEP 1

The **LEVELING GLIDES (1)** at the bottom of the Paulo Bookshelf can move up and down by twisting left or right. This allows the user to level the bookshelf. Adjust levels as needed.



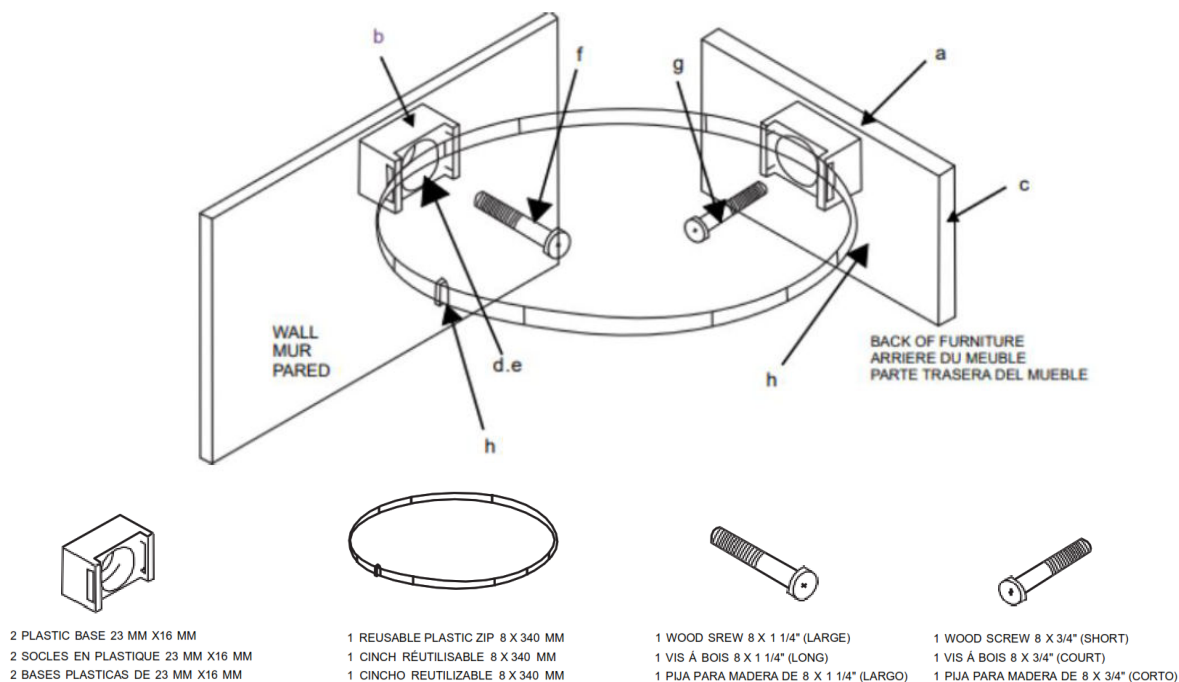
STEP 2

ANTI TIPPING HARDWARE KIT (3)

ANTI- TIPPING HARDWARE KIT / Assembly Instruction

ACCESSOIRES PUOR ATTACHER LES MEUBLES AU MUR / Intructions de montage

ACCESORIO PARA SUJETAR MUEBLES A LA PARED / Instructivo para la instalación



STEPS:

- Locate wall studs behind furniture.
- Mark stud locations on wall with corresponding locations at top of furniture.
- Move furniture away from wall.
- Position bracket on stud.
- Drill holes.
- Screws brackets into studs.
- Screws brackets into furniture back.
- Move furniture close to the wall and line up the brackets.
- Thread the plastic zip cord into wall bracket and furniture bracket.

ETAPES:

- Trouver les poteaux de cloison derrieure le meuble.
- Indique l'emplacement des poteaux sur le mur selon les emplacements correspondants sur le dessus du meuble.
- Ecarter le meuble du mur.
- Placer le support sur le poteau.
- Percer les trous.
- Visser le supports aux poteaux.
- Visser les supports a l'arrière du meuble.
- Rapprocher le meuble du mur et aligner les supports.
- Introduire le cordon a glissière dans le support mural et le support du meuble.

INSTRUCCIONES:

- Marque en la parte superior trasera del mueble uno de los sujetadores.
- Coloque la otra parte del sujetador en la pared a la misma altura de donde marco el anterior.
- Retire el mueble de la pared.
- Coloque y marque la posición de los tornillos del sujetador.
- Haga los agujeros.
- Atornille el sujetador por la pared.
- Atornille el sujetador por la parte trasera del mueble.
- Coloque el mueble cerca de la pared alineando los sujetadores.
- Pase el cable plástico a través del sujetador que está en la pared y el del mueble.