

Ryder Track Arm Sofa


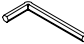


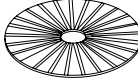
ASSEMBLY INSTRUCTIONS



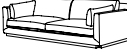
JOON LOLOI

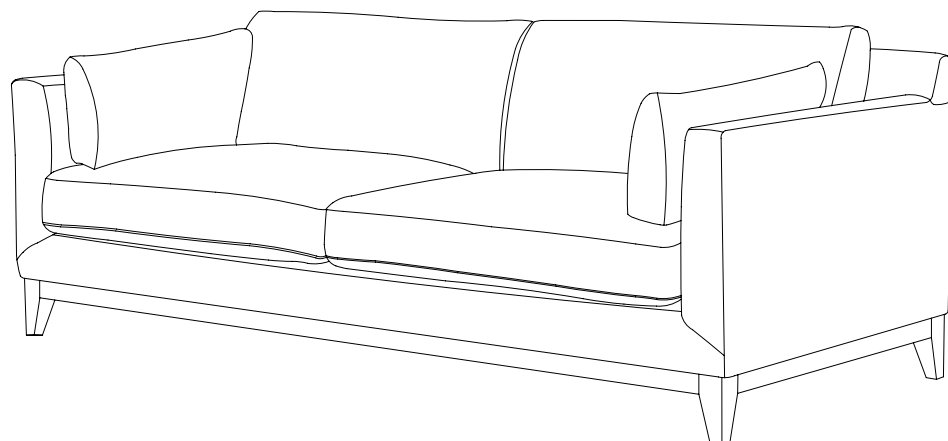
ASSEMBLY INSTRUCTIONS: BEFORE BEGINNING

Read these instructions carefully and keep for future reference. Refer to parts inventory for guidance, and ensure you have all pieces before starting. When assembling, place all parts on a soft, clean, and flat surface such as a carpet to prevent scratches.

1. Carefully unpack and position the item on a clean, non-marring surface to assemble.
2. Read these Assembly Instructions from beginning to end before starting to assemble.
3. Take an inventory of the required parts to ensure all are available.
4. To prevent accidental choking hazards, keep all packing materials away from small children.
5. Only tighten hardware until ALL hardware are fully engaged on their locations. Over-tighten bolts will damage the bolt threads.
6. Use only factory provided hardware to assemble. Unapproved hardware can damage product or jeopardize the structural integrity of the product.
7. The use of power tool to assemble is not recommended due to high risk of over-torque, which can damage the product.

HARDWARE INVENTORY				
ID	IMAGE	DESCRIPTION	SIZE	QTY
A		ALLEN BOLT	M8 X 60	8
B		ALLEN WRENCH	M5	1
C		SPRING WASHER	M8 X 18	8
D		WASHER	M8 X 22	8
E		GROOVED WASHER		1

PARTS INVENTORY			
ID	IMAGE	DESCRIPTION	QTY
F		LEGS	4
G		MIDDLE LEG	1
H		SOFA BODY	1



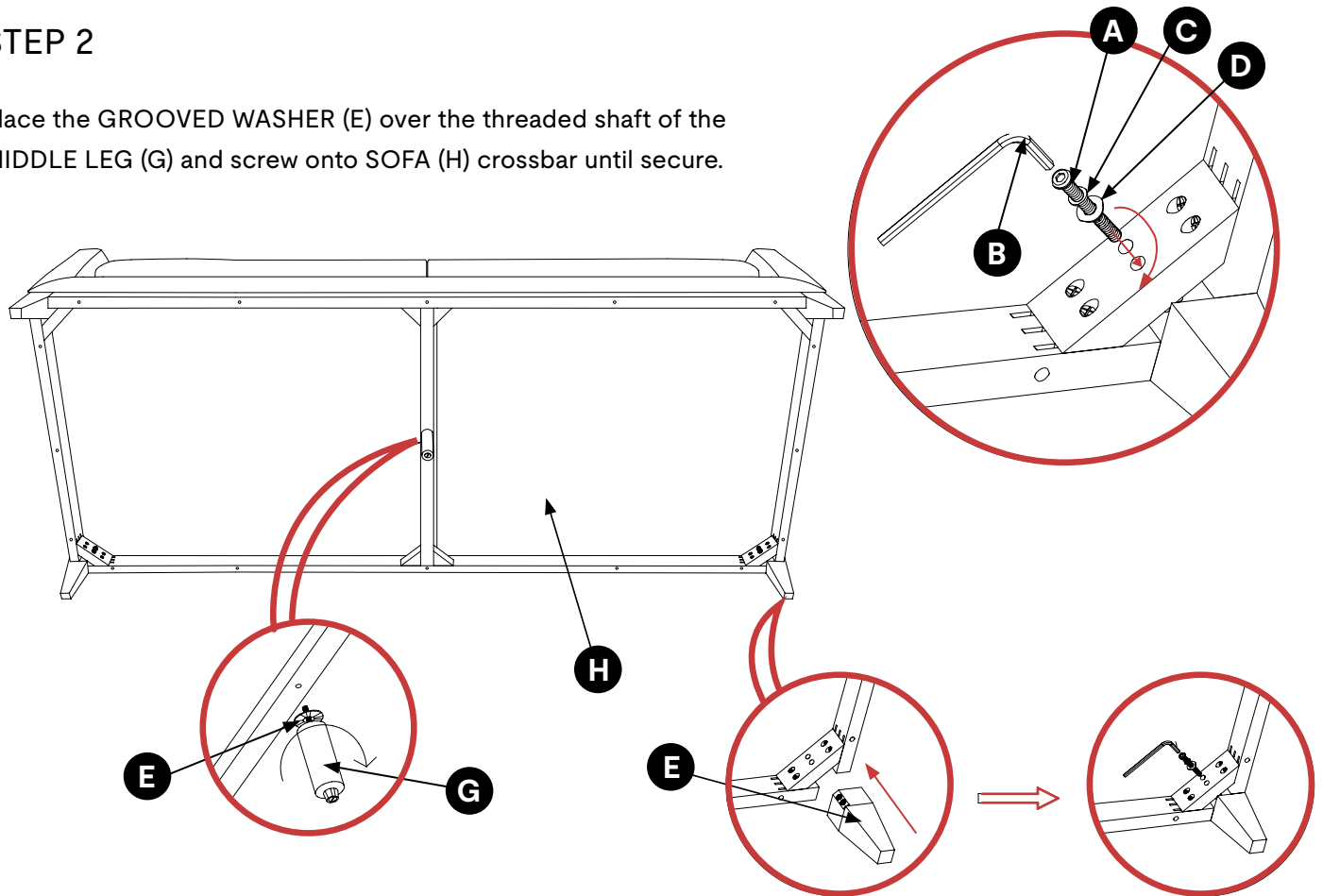
JOON LOLOI

STEP 1

Rotate couch so that the couch back is laying on the ground exposing the bottom of the couch. Locate the four corners where the LEGS (F) will be installed. Insert each LEG (F) behind the diagonal wood crossbar and line up with the two holes on the bar and corner of the LEG (F). Then screw in two sets of BOLTS (A) per leg through the bar. Use the ALLEN WRENCH (B) to screw in the BOLTS (A) making sure the SPRING WASHER (C) and WASHER (D) are threaded onto the bolt and through both the crossbar and LEG (F). Repeat this eight times to secure all four legs.

STEP 2

Place the GROOVED WASHER (E) over the threaded shaft of the MIDDLE LEG (G) and screw onto SOFA (H) crossbar until secure.



STEP 3

Your assembly is complete!

