

## Winston Display Cabinet




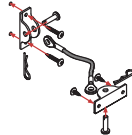
---

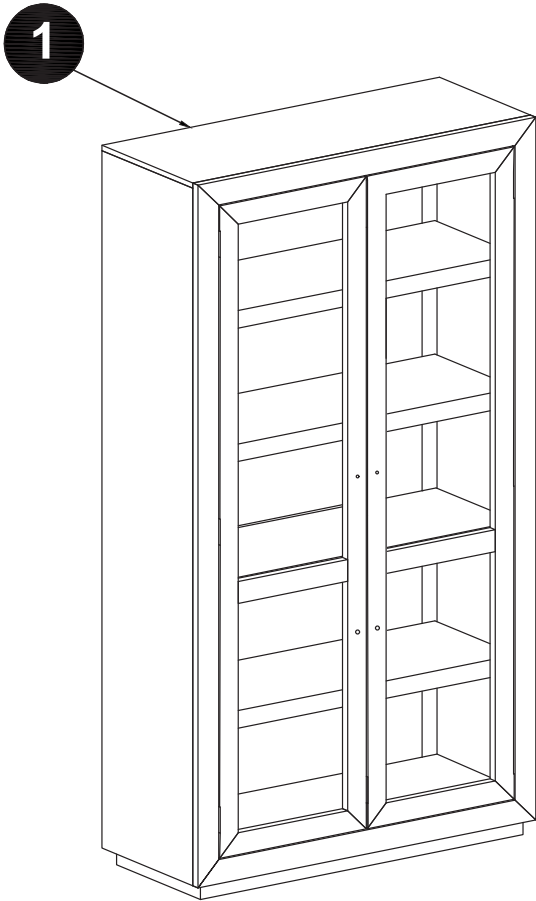
### ASSEMBLY INSTRUCTIONS

ASSEMBLY INSTRUCTIONS

Read these instructions carefully and keep for future reference. Refer to parts inventory for guidance, and ensure you have all pieces before starting. When assembling, place all parts on a soft, clean, and flat surface such as a carpet to prevent scratches.

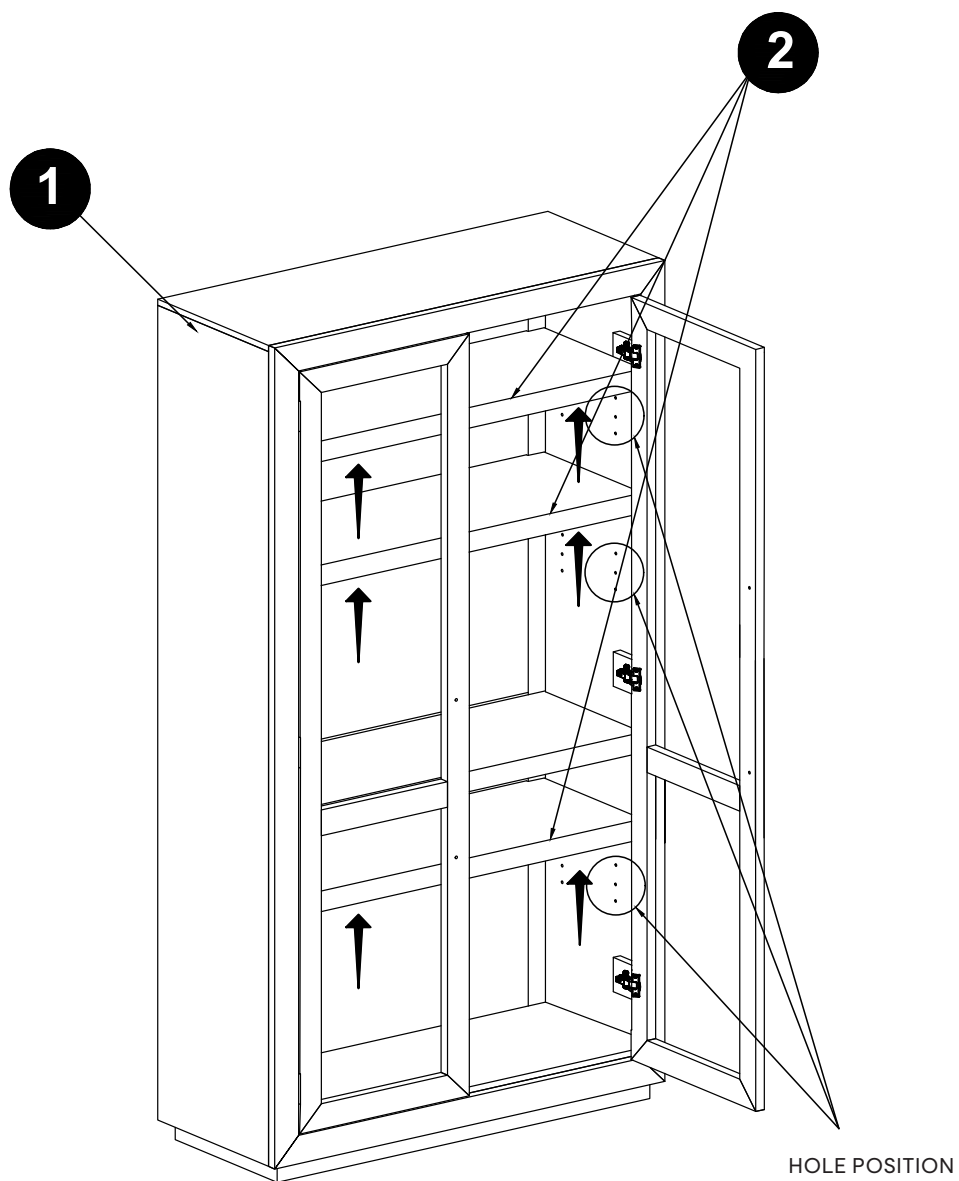
PARTS INVENTORY		
ID	DESCRIPTION	QTY
1	CABINET	1
2	ADJ. SHELF	3

HARDWARE INVENTORY			
ID	IMAGE	DESCRIPTION	QTY
A		SHELF PIN	12
B		HANDLE SCREW 4 x 35mm	4
C		HANDLE	2
C		ANTI TIP KIT	2



## STEP 1

Open the **CABINET DOOR (1)**, then remove the EPS foam blocks. To change the shelf height, remove the screw from the **SHELF PIN (A)**, then carefully lift the shelf upward to locate the desired hole position.

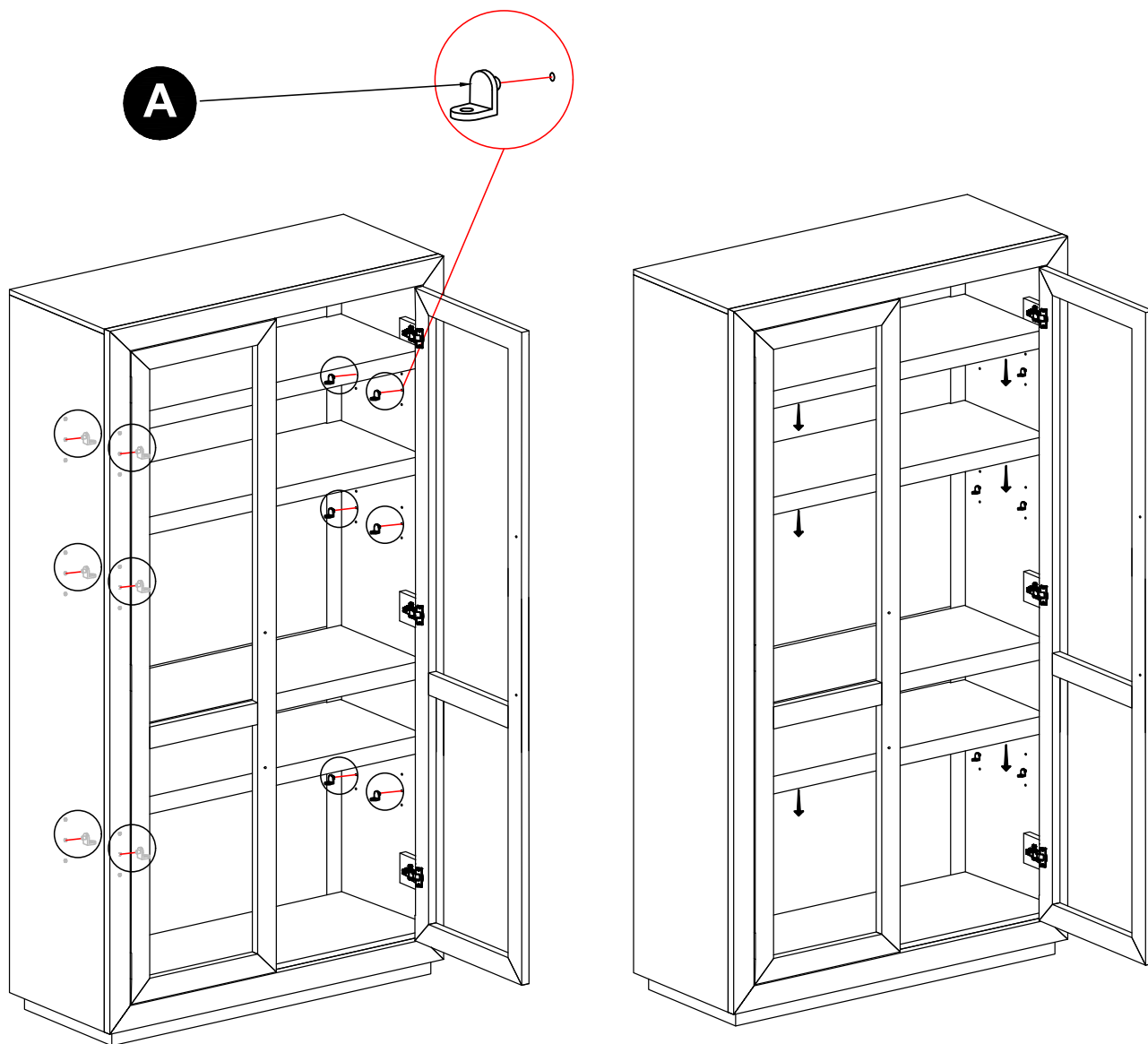


# JOON LOLOI

---

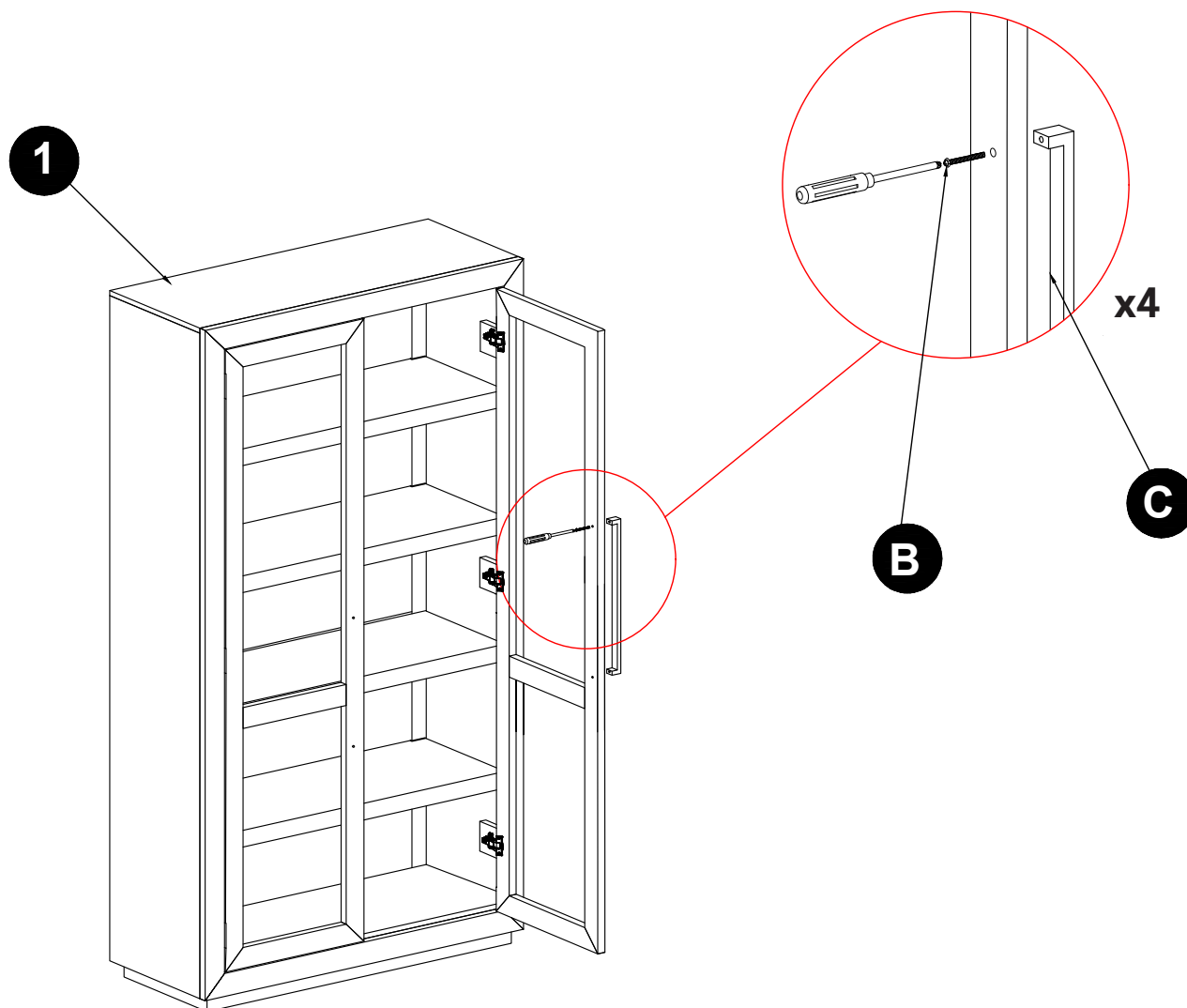
## STEP 2

Insert the **SHELF PIN (A)** into the desired hole position, then adjust the **SHELF (2)** and lower it so it rests securely on the shelf pin.



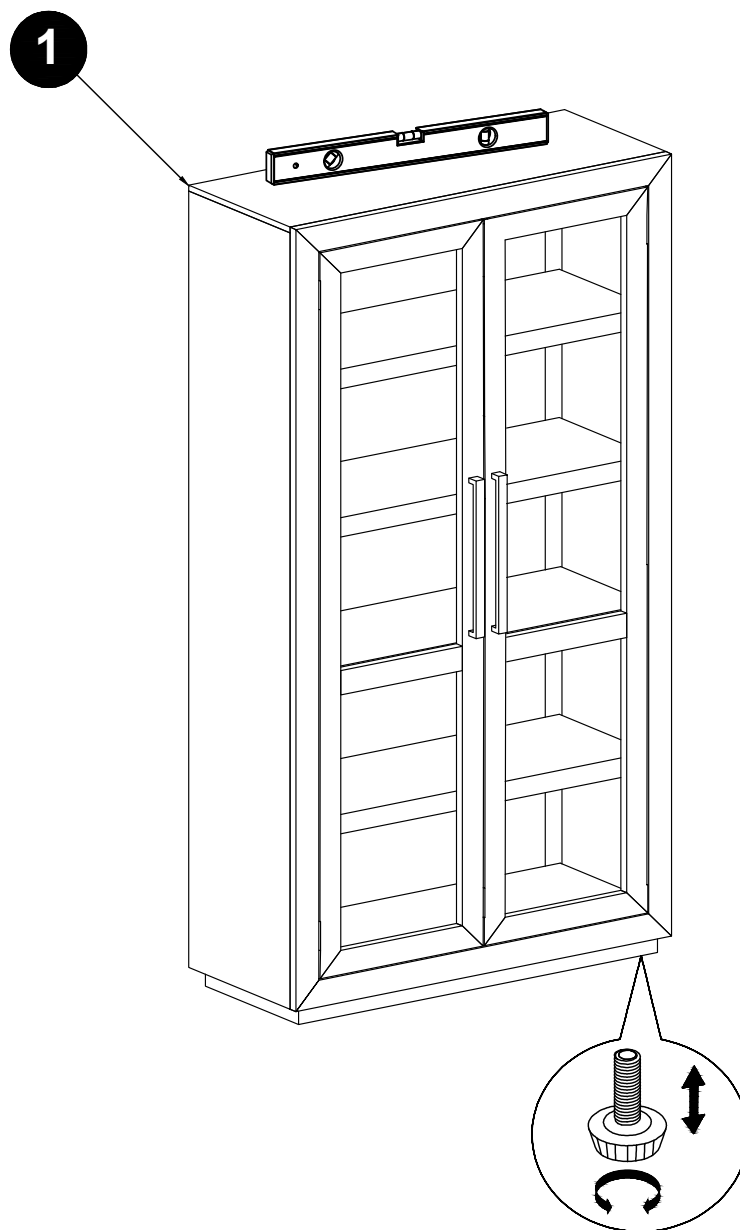
## STEP 3

Align the **HANDLE (C)** with the screw holes on the cabinet door, then secure it using the handle **SCREWS (B)** with a screwdriver.



## STEP 4

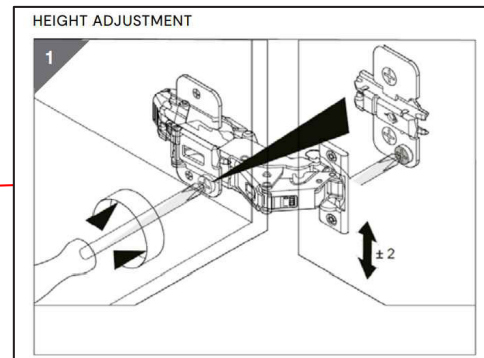
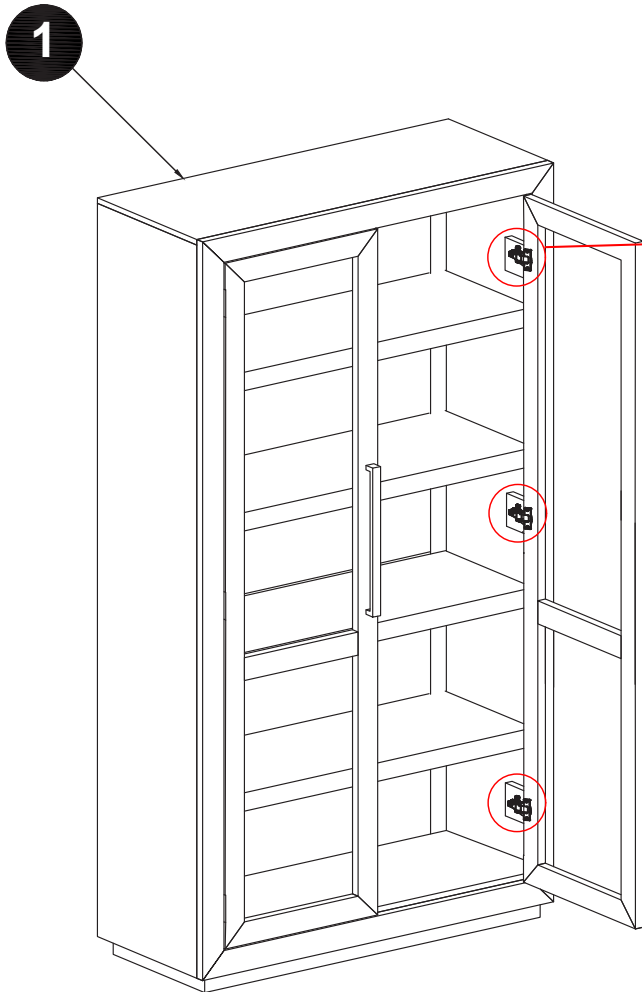
Once all components are secured, adjust the levelers, and the assembly is complete.



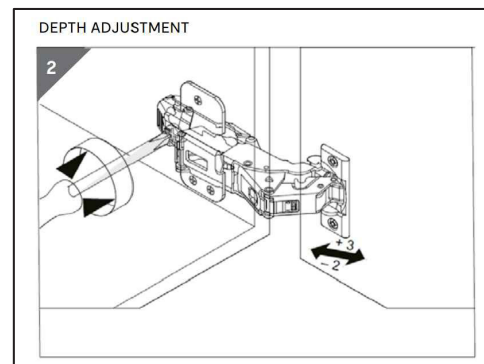
# JOON LOLOI

## STEP 5

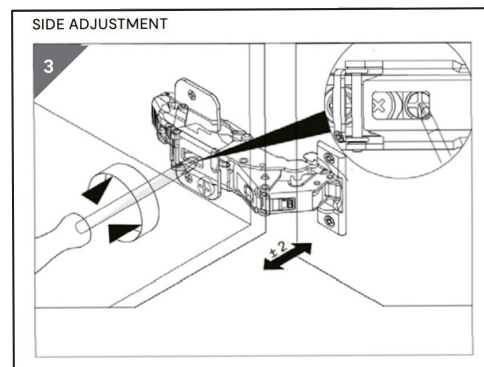
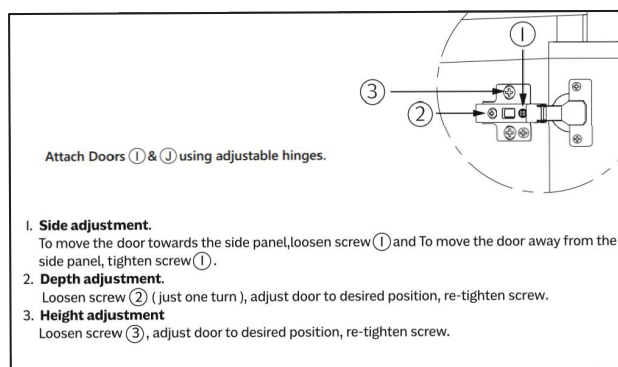
If the doors need adjustment, adjust the soft-close hinges to align the doors, following Step 1, Step 2, and Step 3 listed below.



Loosen Screw, adjust door to desired position, re-tighten screw.



Loosen Screw (just one turn), adjust door to desired position, re-tighten screw.



To move the door towards the side panel.  
Loosen Screw to move the door away from the side panel, re-tighten screw.

HANGMAN ANTI-TIP KIT INSTRUCTIONS

FURNITURE TIPPING RESTRAINT INSTRUCTIONS

Young children may be injured by tipping furniture. The use of a tipping restraint is highly recommended.

When properly installed, this restraint could provide protection against the unexpected tipping of furniture due to small tremors, bumps or climbing. We recommend mounting this restraint to a wall stud. **WARNING:** This product is only a deterrent. It is not a substitute for proper adult supervision.

ANTI-TIP-KIT INSTALLATION INSTRUCTION

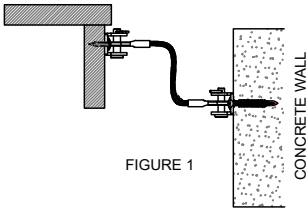
**⚠ WARNING:** Always mount metal brackets to solid wood of furniture. Do not attach to plywood of back panels.

ATTACH THE ANTI-TIP KIT TO A WALL STUD IF POSSIBLE OR HAVE A PROFESSIONAL ATTACH THE KIT TO MASONRY OR A CONCRETE WALL.

1. Attach mounting brackets (A) near the middle-top back edge of the furniture piece by inserting the shorter screws (E).
2. Determine the final position of the furniture piece. Mark locations on the wall approximately 2" below the brackets mounted to the back of the furniture.
3. Attach the second brackets to stud wall by inserting the longer screw (F) (see **FIGURE 1 & FIGURE 2**) or toggle bolt (G) through the drywall (see **FIGURE 3**).
4. Place the furniture so that the brackets on the back edge are in line with the brackets in the wall.
5. Insert the clevis pin (B) through holes on brackets and hole on steel aircraft cable (C). Use hair pin (D) to go through small hole on clevis pin (B) to lock it.
6. Repeat above step to attach the end of aircraft cable (C) to the bracket on the wall.
7. Check to make sure the steel aircraft cable is securely laced and locked to the brackets.

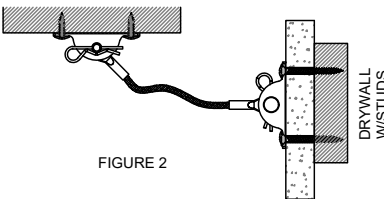
TYPE SECURING FURNITURE AND ASSEMBLY INSTRUCTIONS BY WALL TYPE:

1. Attach to top back frame of cabinet, ideal installation for dressers and chests. See detail in **FIGURE 1**.



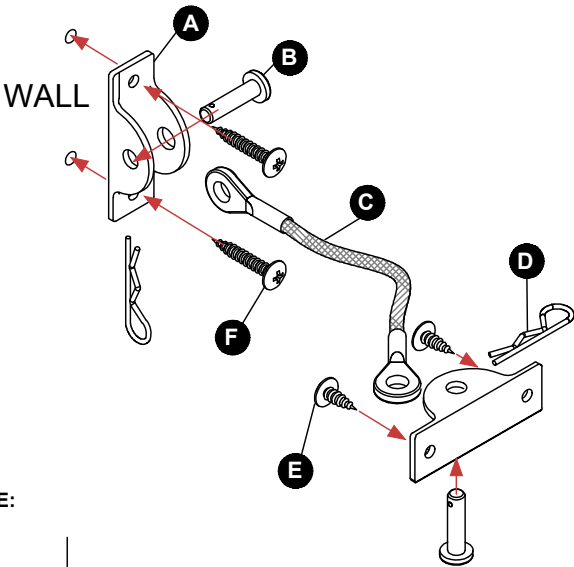
• **CONCRETE:** Drill pilot hole on each marking, and then insert plastic anchor. Use a screwdriver to attach the metal bracket to the wall with screws. See **FIGURE 1**.

2. Attach to underside of top when there is no back rail, drill through plywood back panel. Ideal installation for file cabinets and console table. See detail in **FIGURE 2**.

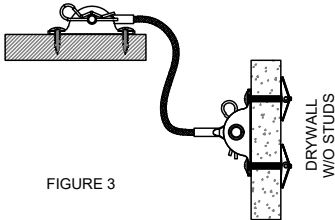


• **DRYWALL WITH STUDS:** Use screws to affix to studs, and use hollow wall anchors and screws to affix to drywall. See **FIGURE 2**.

HARDWARE INVENTORY			
A		METAL BRACKET	4
B		CLEVIS PIN	4
C		AIRCRAFT CABLE	2
D		HAIR PIN	4
E		SHORT SCREW	4
F		LONG SCREW	4
G		LONG SCREW	4



3. Attach to top of tall furniture such as curio cabinets. See detail in **FIGURE 3**.



• **DRYWALL WITHOUT STUDS:** Use toggle bolt and screws to affix to drywall. See **FIGURE 3**.