

## Kimber Mirror

---

### ASSEMBLY INSTRUCTIONS

ASSEMBLY INSTRUCTIONS

Read these instructions carefully and keep for future reference. Refer to parts inventory for guidance, and ensure you have all pieces before starting. When assembling, place all parts on a soft, clean, and flat surface such as a carpet to prevent scratches.

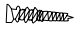

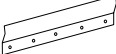
PARTS INVENTORY		
ID	DESCRIPTION	QTY
1	MIRROR	1

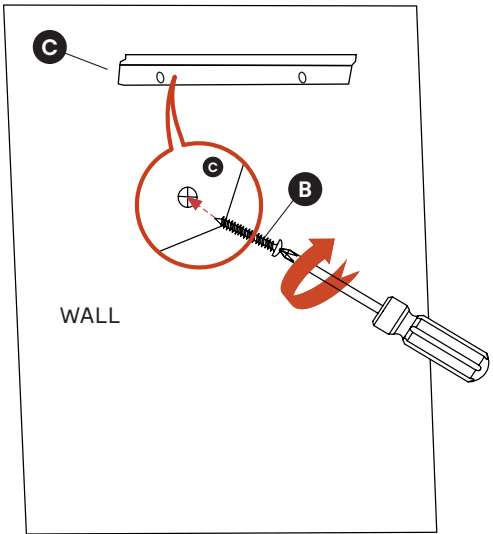
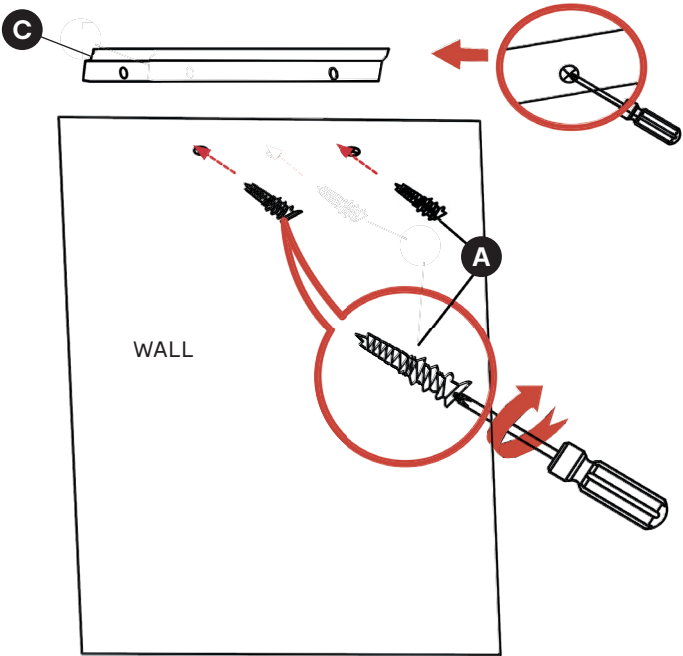
STEP 1

Mark the location of the **CLEAT (C)** holes on the wall and insert **ANCHORS (A)**. Tighten with screwdriver or drill (not included).

STEP 2

Place the **CLEAT (C)** on the wall in it's desired loctation. Ensure the **CLEAT (C)** is level and mark the location of the screw holes. If attaching to drywall, insert **ANCHORS (A)** into the wall at the marked hole locations, then insert **SCREWS (B)** through the **CLEAT (C)** holes and into the **ANCHORS (A)**. Tighten with a phillips head screwdriver. If screwing into studs, no **ANCHORS (A)** are required.

HARDWARE INVENTORY			
ID	IMAGE	DESCRIPTION	QTY
A		ANCHORS	4
B		SCREWS	4
C		CLEAT	2

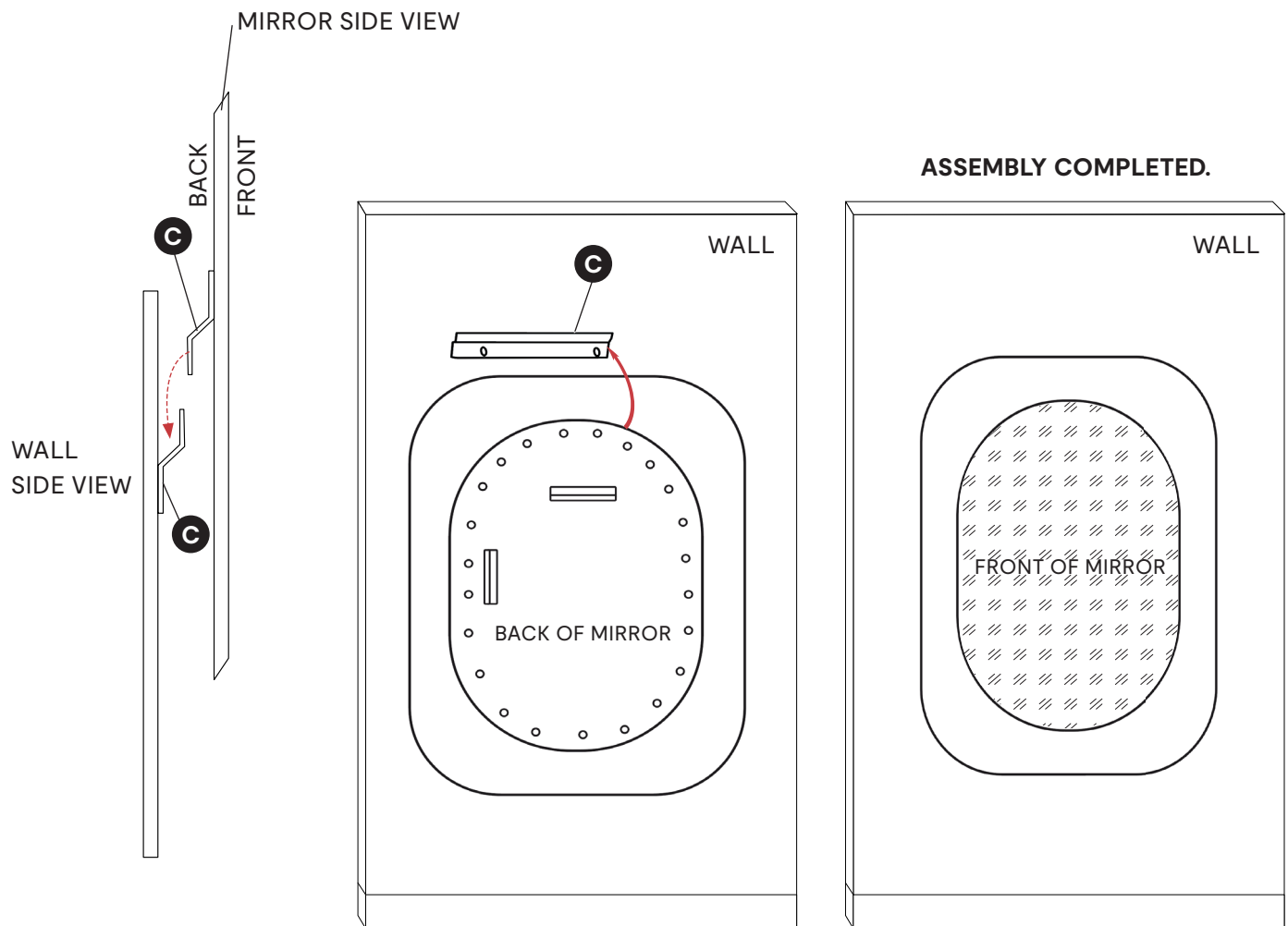


\*Parts not included: Phillips head screwdriver/drill, Pencil, Level, Stud Finder.

# JOON LOLOI

## STEP 3

With help, hang the **MIRROR (1)** onto the **CLEAT (C)** that is attached to the wall, via the **CLEAT (C)** already attached to the **MIRROR (1)** to complete assembly.



## CARE INSTRUCTIONS

Avoid direct exposure to sunlight. Do not place over heat or air conditioning vents. Wipe ideally with a soft cotton cloth. Do not use harsh chemicals. Before cleaning any part, test a small spot in a hidden area. You may need to re-tighten all screws after initial use.